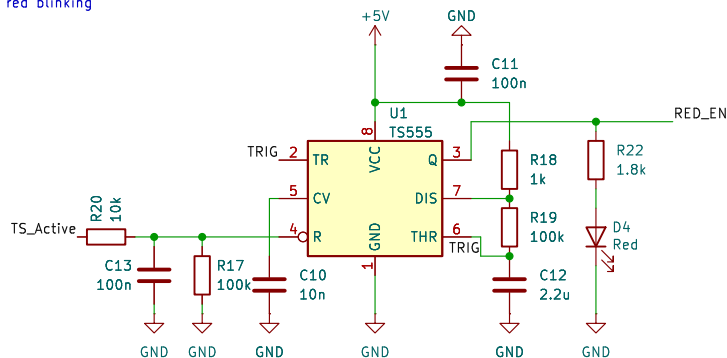


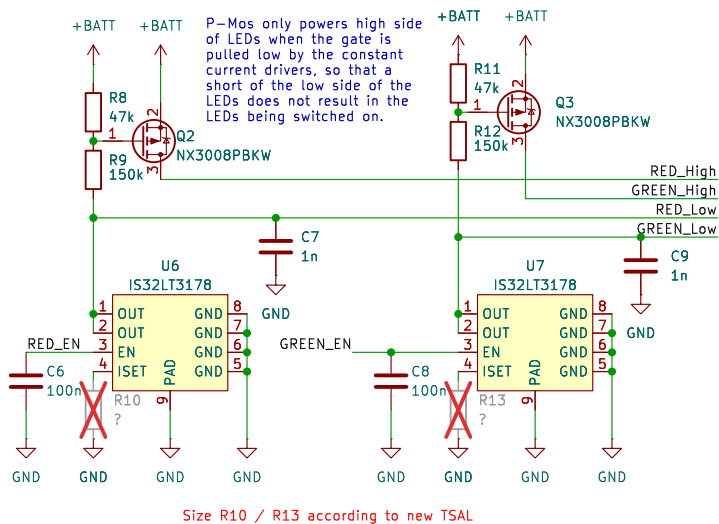
TSAL driver board and DC-link voltage detection

LV TS

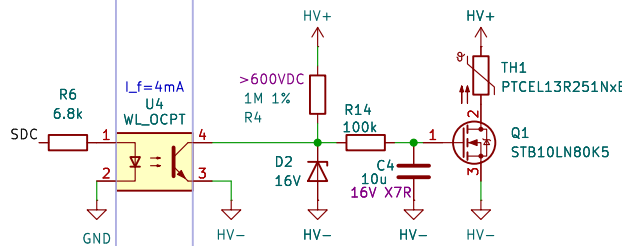
Timer for red blinking



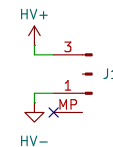
LED Drivers



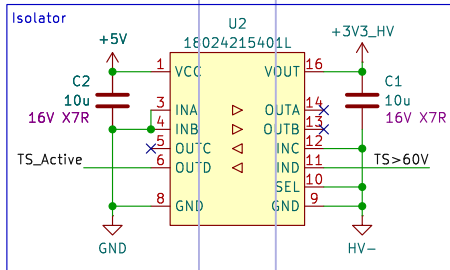
Discharge Circuit



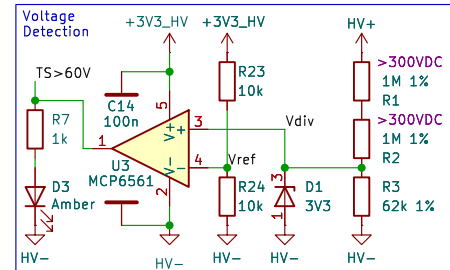
HV Connector



Isolator

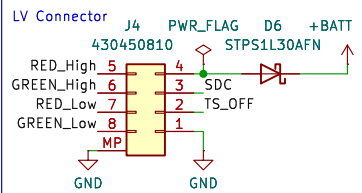


Voltage Detection

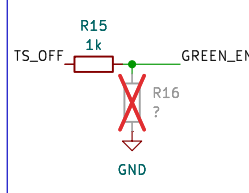


$$V_{ref_max} = 3.47V \cdot 10.1k\Omega / (10.1k\Omega + 9.9k\Omega) = 1.76V$$
$$V_{div@60V_min} = 60V \cdot 61.38\Omega / (2 \cdot 990k\Omega + 61.38k\Omega) = 1.8V$$
$$V_{hyst_max@75deg} = 6mV < 40mV (1.80V - 1.76V)$$

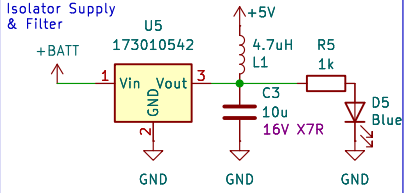
LV Connector



TS Off



Isolator Supply & Filter



FASTTUBE

Title: Discharge Circuit

Project: DC

Author: Karlsson Winkels

Rev: V1

Date: 2024-11-10

Exp. Date: 2025-04-27

Size: A4 Page: 1/1